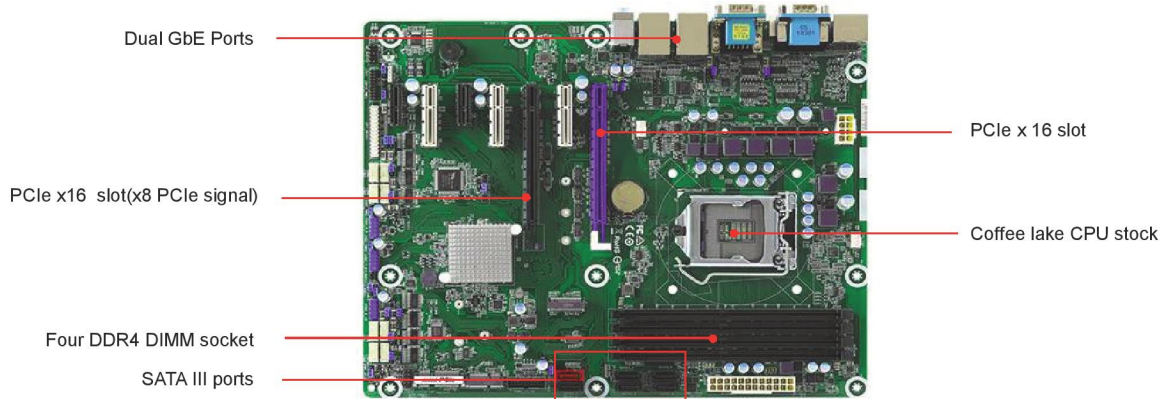


# RUBY-D811-Q370

Support Desktop Intel® 8<sup>th</sup> Gen Core™ Processors  
ATX with DDR4 Long- DIMM up to 64Gb , VGA  
2x DP port , HDMI , Dual GbE LAN, Ten COM Ports



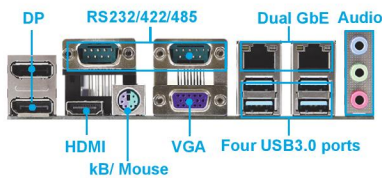
RUBY -D811 is based on Intel® Q370 chipset and Desktop processors including Intel® 8<sup>th</sup> Gen Core™ i3/i5/i7 SKU. This board supports DDR4 ,PCIe 3.0, and SATAIII. Those fratures help you to build high performance and stabile system.

## FEATURES

- Intel® 8<sup>th</sup> Gen Core™ Processors support
- Four Long-DIMM support DDR4 Non-ECC DRAM up to 64GB
- Support dual Ethernet, 10x COM Ports, 6x USB 3.0 Ports , 6x SATA III Ports and Audio
- Two PCIe x16 (1x PCIe x8 signal), three PCIe x4 , two PCIe x2, one mini-PCIe socket , one M.2 (Key E) for Wireless, one M.2 (Key M) for SSD

PCIe slot 1~3 switch function			
Slot1	x16	x8	x8
Slot2	/	/	x4
Slot3	/	x8	x4

## REAR I/O



## ORDERING GUIDE

<b>AB1-3J36</b>	RUBY-D811-Q370 (R).RUBY-D811-Q370.ATX IMB.LGA1151 Q370. w/ DDR4 /VGA/Dual DP/HDMI Dual GbE/COM/Audio/USB
-----------------	---

## PACKING LIST

One RUBY-D 811 motherboard
One Driver CD
One SATA Cable

## GENERAL

Processor	Intel® 8 <sup>th</sup> Gen Core™ Processors CPU in LGA1151 package
Chipset	Intel® Q370
BIOS	AMI uEFI BIOS (SPI ROM)
Memory	Support up to 64GB DDR4 2400/2666 Non-ECC SDRAM on four Long-DIMM socket
Storage Devices	6x SATAIII ports(one is shared with M.2 Key M)
Watchdog Timer	Programmable by embedded controller
Hardware Monitoring	System monitor(Voltage,Fan Speed and Temperature)
Expansion Interface	- 2x PCIe x16 (1x PCIe x8 signal) - 3x PCIe x4 slots , 2x PCIe x1 slots , 1x mini-PCIe socket - 1x M.2 (Key M) for SSD , 1x M.2(Key E) for Wireless

## I/O INTERFACE

Super I/O	NCT5104D
Audio	Audio Jack on rear I/O with Line-out/Mic-in with Realtek ALC887 Audio controller
Ethernet	- Intel® I219LM and Intel® I210AT Ethernet controller - 2x RJ45 connectors on rear I/O
Serial Port	- 2x RS232/422/485 port on rear I/O - 8x RS232 port on pin header
USB	- 4x USB3.0 on rear I/O, 2x USB3.0 on pin header - 6x USB2.0 on pin header
GPIO	8-bit configurable controlled by embedded controller

## DISPLAY

Graphic Controller	- Intel® Gen 9 graphic engine supports DirectX 12, OpenGL 4.6
Display Interface	- DP:Two DP port on rear I/O, resolution up to 4K (4096x2304@60Hz) - VGA:One VGA port on rear I/O resolution up to 1920x1200 @ 60Hz - HDMI:One HDMI connector on rear I/O, resolution up to 4096x2160

## Mechanical & Environment

Dimension	304.8mm(L) x 243.8mm(W) x 1.6mm(H)
Power Supply	ATX
Environment	- Operation temperature:0~60°C - Storage temperature: -20~80°C - Relative humidity:5~95%,non-condensing
MTBF	Over 100,000 hours at 40°C

